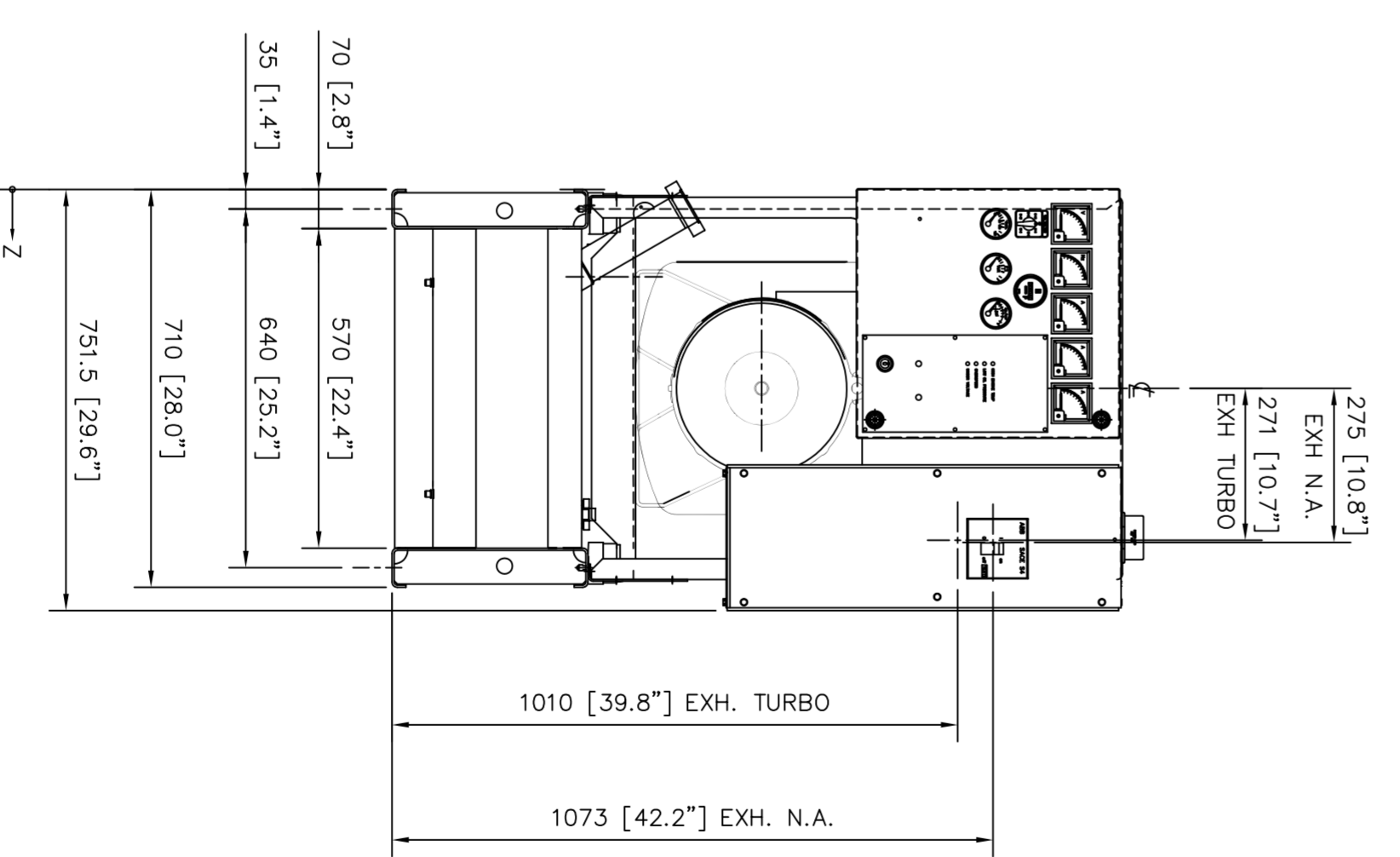
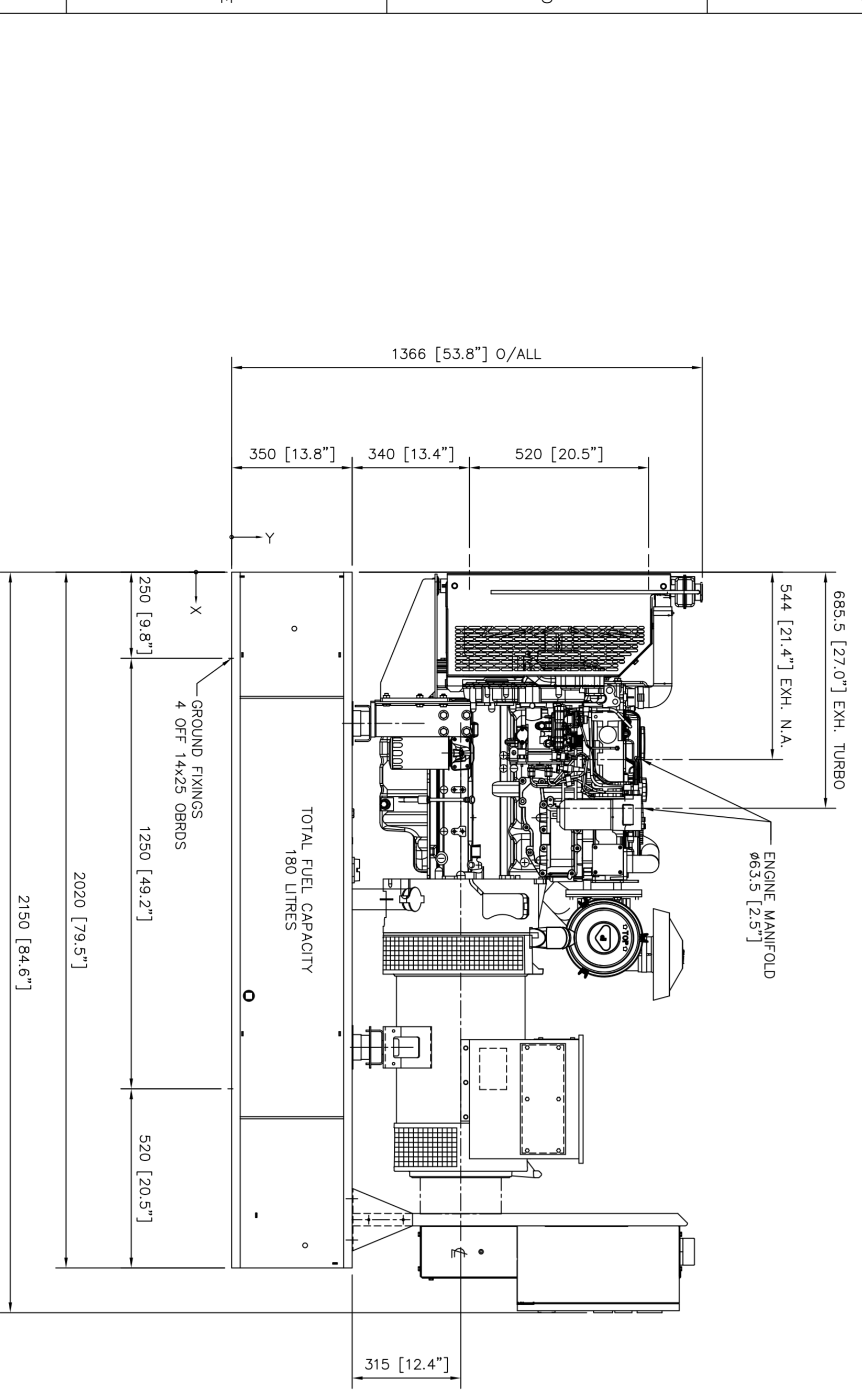
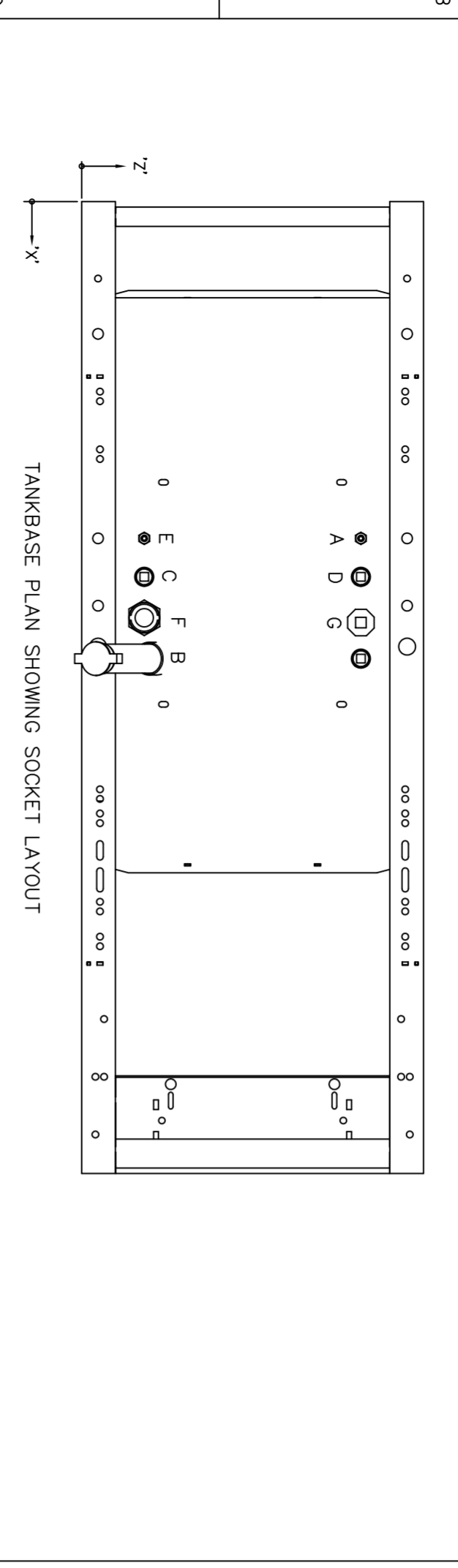


1	2	3	4	5	6	7	8			
DESCRIPTION	DIM X	DIM Y	DIM Z	MODEL	GENSET	WEIGHT (kg)	CENTRE OF GRAVITY			
				ENGINE/ALTERNATOR	(WITH OIL)	(WITH OIL & WATER)	DIM X	DIM Y	DIM Z	
A FUEL SUPPLY - 3/8" BSP SOCKET	700 [27.6"]	315 [12.4"]	130 [5.1"]	P40P3/P44E3/GEP44-5	1103A-33TG1/LL2014B	874	884	789	670	355
B FUEL FILL - 2" BSP SOCKET	950 [37.4"]	315 [12.4"]	130 [5.1"]	P45P3/P50E3/GEP50-5	1103A-33TG1/LL2014C	874	884	789	670	355
C FUEL LEVEL SWITCH - 1" BSP HALF SOCKET	780 [27.6"]	315 [12.4"]	130 [5.1"]	P32P3S/P35E3S/ GEP35SP5	1103A-33TG1/LL2014H	944	954	824	670	355
D REMOTE FUEL SUPPLY - 1" BSP HALF SOCKET	780 [27.6"]	315 [12.4"]	580 [22.8"]	P50P1/P55E1/GEP55-1/ GEP50SP5	1103A-33TG2/LL2014D	894	904	797	670	355
E FUEL RETURN - 3/8" BSP SOCKET	700 [27.6"]	315 [12.4"]	580 [22.8"]	P60P3/P65E3/GEP65-5/ P40P1S/P44E1S/ GEP44SP1	1103A-33TG2/LL2014H	944	954	824	670	355
F FUEL LEVEL GAUGE - 1 1/2" BSP HALF SOCKET	865 [34.1"]	315 [12.4"]	130 [5.1"]	P45P3S/P50E3S/ GEP50SP5	1103A-33TG2/LL2014J	983	993	843	689	355
G REMOTE FUEL RETURN - 1 1/2" BSP SOCKET	875 [34.5"]	315 [12.4"]	580 [22.8"]	P80P1/P88E1/GEP88-1	1104A-44TG2/LL2014L	1061	1074	904	690	355
				P58P1S/P64E1S/ GEP64SP1	1104A-44TG2/LL3014B	1103	1116	917	689	355
				P60P5/P65E5 GEP65-7	1104A-44TG1/LL2014H	999	1012	874	690	355
				P45P5S/P50E5S GEP50SP-7	1104A-44TG1/LL2014J	1039	1052	894	689	355
				P40P5/P44E5 GEP44-7	1104A-44G/LL2014B	904	917	843	696	355
				P32P5S/P35E5S GEP35SP-7	1104A-44G/LL2014H	974	987	889	694	355



1	2	3	4	5	6	7	8	
MODELS	1104A-44G & LL2014B/H ADDED TO WEIGHTS TABLE	25442	P.C.	07/03/06	TOLERANCES EXCEPT WHERE OTHERWISE STATED			ISSUE
D	MODELS P45P5S/P50E5S/GEP50SP-7 ADDED TO WEIGHTS TABLE	25577	P.C.	27/01/06	0 - 500mm	± 1mm		
C	DATUMS 'X' & 'Z' ADDED TO SOC. L'OUT DRW.1104-44TG1/LL2014H ADDED	24878	J.M.C.	11/10/05	500 - 2000mm	± 2mm		
B	WEIGHTS AND CENTRE OF GRAVITY ADDED	-	J.E.	18/05/05	OVER 2000mm	± 3mm		
A	FIRST ISSUE	-	J.M.C.	04/02/04	STRUCTURAL	± 3mm		
	ISSUE DESCRIPTION	ECR/DOR	BY	DATE	ANGULAR	± 1°		

1	2	3	4	5	6	7	8
DRN. BY	J.M.CRACKEN	TITLE	G.A. OF 1104A-44G/TG1/2/1103A-TG1/2/LL2014B C/D/H/L/LL3014B OPEN SETS WITH NON-UL BASE	DATE	04/02/04	SHEET	A1
DO NOT SCALE	ALL DIMENSIONS IN MILLIMETRES UNLESS OTHERWISE STATED	THIS DRAWING IS COPYRIGHTED AND MAY BE COPIED ONLY FOR THE PURPOSES OF MAINTAINING THE PURCHASED EQUIPMENT BY THE PURCHASER	DO NOT SCALE	ALL DIMENSIONS IN MILLIMETRES UNLESS OTHERWISE STATED	3rd ANGLE PROJECTION	ORIGINAL SCALE	1:10
						DRAWING NO.	MGA6579
						ISSUE	E