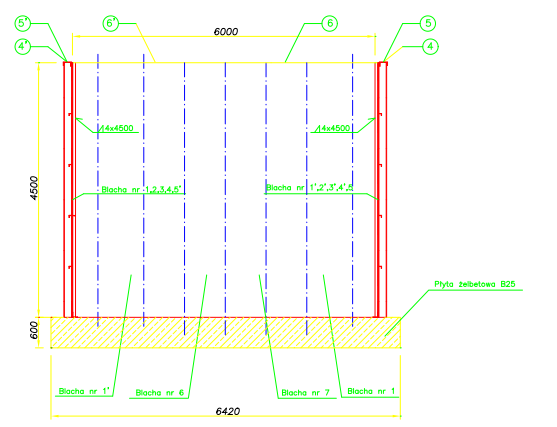
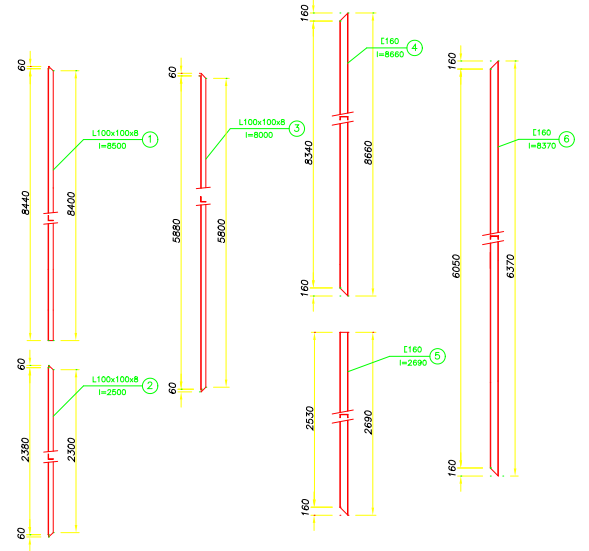
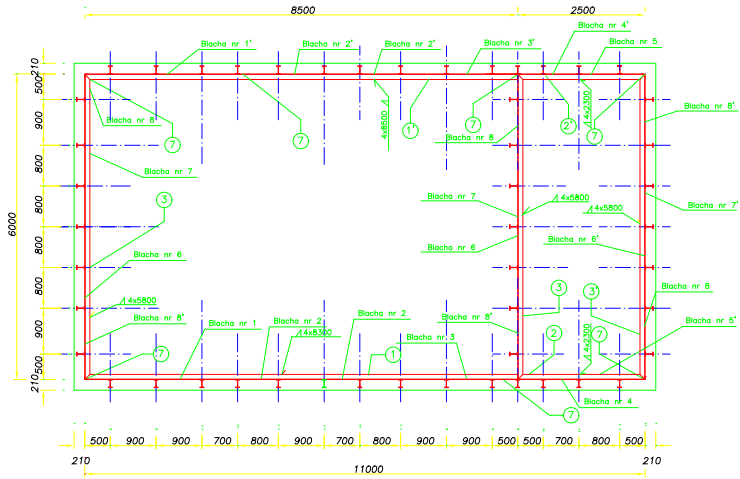


Konstrukcja zbiornika reaktora biologicznego



Symbol	Opis	Materiał	Prętki	Prętki	Prętki
1	Blacha nr 1	Stal	100x100x8	114,6	784,2
2	Blacha nr 2	Stal	100x100x8	114,6	784,2
3	Blacha nr 3	Stal	100x100x8	114,6	784,2
4	Blacha nr 4	Stal	100x100x8	114,6	784,2
5	Blacha nr 5	Stal	100x100x8	114,6	784,2
6	Blacha nr 6	Stal	100x100x8	114,6	784,2
7	Blacha nr 7	Stal	100x100x8	114,6	784,2
8	Blacha nr 8	Stal	100x100x8	114,6	784,2
9	Blacha nr 9	Stal	100x100x8	114,6	784,2
10	Blacha nr 10	Stal	100x100x8	114,6	784,2
11	Blacha nr 11	Stal	100x100x8	114,6	784,2
12	Blacha nr 12	Stal	100x100x8	114,6	784,2
13	Blacha nr 13	Stal	100x100x8	114,6	784,2
14	Blacha nr 14	Stal	100x100x8	114,6	784,2
15	Blacha nr 15	Stal	100x100x8	114,6	784,2
16	Blacha nr 16	Stal	100x100x8	114,6	784,2
17	Blacha nr 17	Stal	100x100x8	114,6	784,2
18	Blacha nr 18	Stal	100x100x8	114,6	784,2
19	Blacha nr 19	Stal	100x100x8	114,6	784,2
20	Blacha nr 20	Stal	100x100x8	114,6	784,2
21	Blacha nr 21	Stal	100x100x8	114,6	784,2
22	Blacha nr 22	Stal	100x100x8	114,6	784,2
23	Blacha nr 23	Stal	100x100x8	114,6	784,2
24	Blacha nr 24	Stal	100x100x8	114,6	784,2
25	Blacha nr 25	Stal	100x100x8	114,6	784,2
26	Blacha nr 26	Stal	100x100x8	114,6	784,2
27	Blacha nr 27	Stal	100x100x8	114,6	784,2
28	Blacha nr 28	Stal	100x100x8	114,6	784,2
29	Blacha nr 29	Stal	100x100x8	114,6	784,2
30	Blacha nr 30	Stal	100x100x8	114,6	784,2
31	Blacha nr 31	Stal	100x100x8	114,6	784,2
32	Blacha nr 32	Stal	100x100x8	114,6	784,2
33	Blacha nr 33	Stal	100x100x8	114,6	784,2
34	Blacha nr 34	Stal	100x100x8	114,6	784,2
35	Blacha nr 35	Stal	100x100x8	114,6	784,2
36	Blacha nr 36	Stal	100x100x8	114,6	784,2
37	Blacha nr 37	Stal	100x100x8	114,6	784,2
38	Blacha nr 38	Stal	100x100x8	114,6	784,2
39	Blacha nr 39	Stal	100x100x8	114,6	784,2
40	Blacha nr 40	Stal	100x100x8	114,6	784,2
41	Blacha nr 41	Stal	100x100x8	114,6	784,2
42	Blacha nr 42	Stal	100x100x8	114,6	784,2
43	Blacha nr 43	Stal	100x100x8	114,6	784,2
44	Blacha nr 44	Stal	100x100x8	114,6	784,2
45	Blacha nr 45	Stal	100x100x8	114,6	784,2
46	Blacha nr 46	Stal	100x100x8	114,6	784,2
47	Blacha nr 47	Stal	100x100x8	114,6	784,2
48	Blacha nr 48	Stal	100x100x8	114,6	784,2
49	Blacha nr 49	Stal	100x100x8	114,6	784,2
50	Blacha nr 50	Stal	100x100x8	114,6	784,2
51	Blacha nr 51	Stal	100x100x8	114,6	784,2
52	Blacha nr 52	Stal	100x100x8	114,6	784,2
53	Blacha nr 53	Stal	100x100x8	114,6	784,2
54	Blacha nr 54	Stal	100x100x8	114,6	784,2
55	Blacha nr 55	Stal	100x100x8	114,6	784,2
56	Blacha nr 56	Stal	100x100x8	114,6	784,2
57	Blacha nr 57	Stal	100x100x8	114,6	784,2
58	Blacha nr 58	Stal	100x100x8	114,6	784,2
59	Blacha nr 59	Stal	100x100x8	114,6	784,2
60	Blacha nr 60	Stal	100x100x8	114,6	784,2
61	Blacha nr 61	Stal	100x100x8	114,6	784,2
62	Blacha nr 62	Stal	100x100x8	114,6	784,2
63	Blacha nr 63	Stal	100x100x8	114,6	784,2
64	Blacha nr 64	Stal	100x100x8	114,6	784,2
65	Blacha nr 65	Stal	100x100x8	114,6	784,2
66	Blacha nr 66	Stal	100x100x8	114,6	784,2
67	Blacha nr 67	Stal	100x100x8	114,6	784,2
68	Blacha nr 68	Stal	100x100x8	114,6	784,2
69	Blacha nr 69	Stal	100x100x8	114,6	784,2
70	Blacha nr 70	Stal	100x100x8	114,6	784,2
71	Blacha nr 71	Stal	100x100x8	114,6	784,2
72	Blacha nr 72	Stal	100x100x8	114,6	784,2
73	Blacha nr 73	Stal	100x100x8	114,6	784,2
74	Blacha nr 74	Stal	100x100x8	114,6	784,2
75	Blacha nr 75	Stal	100x100x8	114,6	784,2
76	Blacha nr 76	Stal	100x100x8	114,6	784,2
77	Blacha nr 77	Stal	100x100x8	114,6	784,2
78	Blacha nr 78	Stal	100x100x8	114,6	784,2
79	Blacha nr 79	Stal	100x100x8	114,6	784,2
80	Blacha nr 80	Stal	100x100x8	114,6	784,2
81	Blacha nr 81	Stal	100x100x8	114,6	784,2
82	Blacha nr 82	Stal	100x100x8	114,6	784,2
83	Blacha nr 83	Stal	100x100x8	114,6	784,2
84	Blacha nr 84	Stal	100x100x8	114,6	784,2
85	Blacha nr 85	Stal	100x100x8	114,6	784,2
86	Blacha nr 86	Stal	100x100x8	114,6	784,2
87	Blacha nr 87	Stal	100x100x8	114,6	784,2
88	Blacha nr 88	Stal	100x100x8	114,6	784,2
89	Blacha nr 89	Stal	100x100x8	114,6	784,2
90	Blacha nr 90	Stal	100x100x8	114,6	784,2
91	Blacha nr 91	Stal	100x100x8	114,6	784,2
92	Blacha nr 92	Stal	100x100x8	114,6	784,2
93	Blacha nr 93	Stal	100x100x8	114,6	784,2
94	Blacha nr 94	Stal	100x100x8	114,6	784,2
95	Blacha nr 95	Stal	100x100x8	114,6	784,2
96	Blacha nr 96	Stal	100x100x8	114,6	784,2
97	Blacha nr 97	Stal	100x100x8	114,6	784,2
98	Blacha nr 98	Stal	100x100x8	114,6	784,2
99	Blacha nr 99	Stal	100x100x8	114,6	784,2
100	Blacha nr 100	Stal	100x100x8	114,6	784,2



SZKOLENIE SŁUŻB OCHRONY ŚRODOWISKA I PROJEKTOWANIE	
Adres:	99-220 Wartawie Piłsudskiego 23 tel.0423721794
Biuro:	Biuro Projektów i Inżynierii Środowiska i Budownictwa
Instalacja:	Biuro St. Ew. Nr. 256/9, 260/9, 260/4, 260/6
Biuro:	Budownictwo i Inżynieria
Instalacja:	Konstrukcja zbiornika reaktora biologicznego
Biuro:	pl. 7, 7B-8 tel. 0423721794
Projektant:	mgr inż. Michał Oleśki BH-10.9/81/80
Opracował:	Tomasz Wójciszyn KPZ 572
Sprawił:	mgr inż. Ryszard Łukowski upr. 1776/87
Data:	Styczeń 2005 r. Podziałka : I : 50 Nr rys.:

